



TOGETHER FOR TRANSFORMATION

Research for a Changing World

Exploring transformational
research to support
collaboration, innovation
and policy change.

WEDNESDAY 24 MAY 2023

CONFERENCE SPEAKERS



Dr Olumide Adisa

University of Suffolk

Olumide Adisa is a Senior Research Fellow in the Institute of Social Justice and Crime. In 2019, she founded the Centre for Abuse Research (now re-embodied as Trauma, Injustice, Violence, and Abuse), and the Domestic Abuse Research Network for the East of England region. Her research and scholarly interests are cross-disciplinary (economics, sociology, social policy, and socio-legal) with a strong focus on access to justice, social justice and systems approaches. Her core specialisms are in systems thinking, applying economic and sociological methods in the fields of domestic abuse, social exclusion, health equity, and international development. She has completed several high impact, high profile complex research projects as a principal investigator and project lead, securing significant funding awards to undertake research and evaluations on domestic abuse and related areas. She is currently researching complex systems research methodologies to uncover new and transformative ways for tackling violence and abuse in society.



Dr Katherine Allen

University of Suffolk

Dr Katherine Allen is a Research Fellow in the Institute for Social Justice and Crime at the University of Suffolk. She has cross-disciplinary research experience in sociology, philosophy and literature, with strong research interests in sexual/gender-based violence and the evolution of feminism ending violence movements, feminist and social epistemology, and philosophy of literature, mind and the emotions. Following the completion of her PhD in Philosophy in 2013, Katherine worked in the social care and voluntary sectors, latterly working for a Suffolk-based sexual violence charity. Her experiences working in the sector spurred her to pursue a Masters in Woman and Child Abuse Studies and embark on a primary research project to understand the experiences of women working within the Rape Crisis movement.



Dr Hiyam Al-Jabr

University of Suffolk

Dr. Al-Jabr is interested in research that is focused on providing patient-centred care and raising patients' voices to be heard and taken into account. She believes that this individualised approach would help in achieving several outcomes of therapy, not only for people receiving healthcare services, but also for healthcare providers. Hiyam is currently interested in providing individualised support to people with long-covid as part of the optimal health program.

Prior to this, Hiyam worked as a project coordinator and senior research associate at the Pharmacy Practice team at the University of East Anglia (UEA) (2019-2021). Hiyam holds a PhD in pharmacy practice from UEA in 2020. Whilst doing her PhD, Hiyam worked as a part time Associate Tutor in pharmacy practice and research associated in the School of Pharmacy. Hiyam's work involved using both qualitative and quantitative research methods in collecting and analysing data.



Dr Jenny Amos

University of Suffolk

Dr Jenny Amos holds a PhD in Linguistics from the University of Essex, where she also completed both her BA Hons English Language and Linguistics, and MA Hons Sociolinguistics. Specialising in sociolinguistics and phonology, her research focuses on the modelling of language variation within theoretical linguistic frameworks. Over the years, Jenny has presented at a number of international conferences and much of her work is centred on the variation and historical development of dialects across East Anglia, building on work completed for her PhD thesis, which focused on the changes in Mersea Island English, Essex. She is currently working on a number of projects relating to the analysis and documentation of East Anglian speech, as well as projects which aim to promote linguistic studies to younger students and the general public.



Dr David Atkins

University of Suffolk

David is a Lecturer in Psychology, and is Deputy Course Leader for the University of Suffolk's Psychology courses. His research interests lie predominantly in social psychology - specifically, the factors that shape empathy. However, in recent years David has been exploring psychology within education contexts including the psychological barriers and facilitators that enhance/impede learning and attainment. He is a Fellow of the Higher Education Academy.



Arianna Barbin

University of Suffolk

Arianna Barbin is a PhD candidate at the Institute for Social Justice and Crime at the University of Suffolk, investigating police officers' insight on specialism when policing sex offences. Arianna has also been involved as a Research Associate to conduct quantitative research for Pillar 1&2 of Operation Soteria Bluestone, and a range of other research projects involving the analysis of police data. Arianna's background spans across forensic psychology and criminal justice, with a strong research focus on rape myths, child abuse, violence against women and girls (VAWG) and sexism. She has conducted research on the influence of newspapers in legitimising Italian and British participants' sexist attitudes towards women, as well as papers on the predictors of charge rate and victim attrition in domestic violence cases.



Dr Susan Barnet

University of Suffolk

Susan Barnet's artistic practice and research is composed of dual foci; firstly on artist-based negotiations with personal anecdote, often from within historic archives, and secondly on pedagogy surrounding Fine Art in Higher Education. She examines practical, social and political issues and how these influence the creative process of the artist, having developed research groups such as radical reThink at UAL and worked on projects with the Mass Observation Archive.

www.sebarnet.net

insta: @sebarnet



Alison Bishop

University of Suffolk

Alison has worked in the Childhood department at University of Suffolk for over three years, teaching on a variety of modules relating to the psychology and sociology of childhood. She has an interest in special needs, in particular autism spectrum disorders. She also has experience in play therapy for children with autism, having worked in a number of different education settings in the past. Alison is also a counsellor and a coach and so brings a therapeutic approach to all she does.

Alison's research interests are in resilience, and involve creating a kinder, more inclusive message in the narrative around this topic. She has recently passed her PhD viva on this topic, having completed a study on resilience with mothers of children on the autistic spectrum. The findings of her research proposes a new conceptual framework model of resilience.



Dr Jane Black

University of Suffolk

Dr Jane Black is an Associate Professor in Sports Sciences at the University of Suffolk. Specifically, Jane's area of expertise is exercise physiology, and understanding how the body can respond and adapt to different modes of exercise. Jane is interested in the role that exercise/physical activity can play in preventing or managing disease, and promoting health, both on an individual basis and at a population level. This has led to research investigating the use of exercise in the workplace, to promote physical and mental wellbeing, and also around developing strategies to promote physical activity in Suffolk.



Noel Bowler

University of Suffolk

Noel Bowler is a photographer and educator. Born in Ireland, he holds an MFA in photography from University of Ulster, Belfast and a BA (Hons) degree in Documentary Photography from the University of Wales, Newport. His work has been exhibited worldwide including at the New York Photofestival, Dali International Festival, Yunan, China, with recent solo exhibitions in Photo Museum Ireland, Impressions Gallery, Bradford and RPS Gallery, Tokyo. His previous two books include Union – A look at the spaces of organised labour, and Above The Fold – Visualising media work practice in a globalised workplace.

He has been nominated for both the Deutsche Börse Photography Prize and for the Prix Pictet Photography Prize. Bowler's photographs, exhibitions and publications continue to look at the ongoing consideration of the political forces that shape our world, reflected through the organisation of social space.



Emma Brinkley

Suffolk Public Health

My role is Wider Determinants Lead for Suffolk Public Health and Communities, working on the wider determinants of health: the aspects of our environments in which we live, work, play and study that have an impact on our health and wellbeing. I lead a programme of work around the health aspects of the natural environment, including climate change, sustainability, green and blue space, and air quality, and work with system partners to shape and influence actions around these areas.



Abbie Cairns

Norwich University of the Arts

Abbie Cairns is an artist-teacher working in Adult Community Learning. She is currently completing her PhD at Norwich University of the Arts, in which she is researching the identity transformation of artist-teachers in ACL.

Cairns identifies herself as an artist-teacher and is engaged in art and teaching practices. Abbie is interested in how those who identify as artist-teachers in ACL came to develop their identity.

Abbie is a text-based artist who makes and exhibits work regularly. Her art practice uses language to communicate with audiences inside and outside of gallery settings. Her practice employs shared public language, which can be accessed and interpreted in an infinite number of ways by an audience.

Cairns sits on the board of Colchester Art Society and works with SPACE to facilitate the Creative Practitioner Support Programme, which supports emerging artists through peer-to-peer feedback sessions and collaborative residencies. She also facilitates GuildHE's peer-to-peer sessions and is part of Norwich University of the Arts Human Interfaces research group.



Professor Brian Castellani

Durham University

Brian is Professor of Sociology, Director of the Research Methods Centre and Co-Director of the Wolfson Research Institute for Health and Wellbeing at Durham University, UK. He is also Adjunct Professor of Psychiatry (Northeastern Ohio Medical University, USA), Editor of the Routledge Complexity in Social Science series, CO-I for the Centre for the Evaluation of Complexity Across the Nexus, and a Fellow of the UK National Academy of Social Sciences. Brian also runs InSPIRE, a UK policy and research consortium for mitigating the impact places have on air quality, dementia and brain health across the life course. Brian is trained as a public health sociologist, clinical psychologist, and methodologist and takes a transdisciplinary approach to his work. His methodological focus is primarily on computational modelling and mixed-methods. He and his colleagues have spent the past ten years developing a new case-based, data mining approach to modelling complex social systems and social complexity, called COMPLEX-IT, which they have used to help researchers, policy evaluators, and public sector organisations address a variety of complex public health issues.



Dr Sam Chenery-Morris

University of Suffolk

Dr Sam Chenery-Morris is the Dean of the School of Health and Sports Sciences. She is also an Associate Professor with a background in nursing and midwifery. She has always been particularly interested in women's lives and health. Sam has published extensively including writing midwifery textbooks, and chapters in textbooks, individual and collaborate research findings and reports and articles about nutrition in pregnancy.

She has worked on the National Institute for the Institute of Health and Care Excellence (NICE) Antenatal Care clinical guidelines committee as an academic midwife from 2018-2021 and therefore has extensive knowledge and experience of complex interprofessional research. She was delighted to be principal investigator on the inclusivity in menopause research project and hear the experiences of staff within the integrated care systems. She is now working on another menopause research project in Suffolk.



Sara Christou

Loughborough University

For over a decade Sara has worked extensively in the charity sector, specialising in international development and gender equity. Most recently, as Director of Think Aloud Consulting, she provides expert fundraising advice to multiple non-profit organisations.

Prior to this, Sara attained a Master of Science (MSc) in Forced Migration at the University of Oxford's Refugee Studies Centre, in addition to her MA and BA Hons in Theological and Religious Studies from the University of Cambridge.

In 2021, Sara became a Doctoral Researcher at Loughborough University with a fully-funded Studentship. Her Ph.D. is part of the Harnessing Opportunities for Meaningful Environments (HOME) Centre for Doctoral Training (CDT), a transdisciplinary cohort of seven Doctoral Researchers rethinking home and homelessness through creative methods.

Alongside her research, Sara also hosts The Meaning of Home Podcast, discussing concepts of home and homelessness with expert guests: <https://meaningofhome.podbean.com>



Su Conquer

University of Suffolk

I am a PhD student at the University of Suffolk with the Integrated Care Academy (ICA). The PhD research is looking at the impact of co-production with service users, unpaid carers and members of staff on the design and transformation of integrated care. I am also Co-production Coordinator at Healthwatch Suffolk and an Associate with the ICA one-day a week to support the Co-production Hub. I support people in Suffolk and beyond to further understand co-production ensuring people who use services, as experts in their lived experience, can work equitably within health and care services for improvement, inclusivity and accessibility.

The systematic review presented at the Together for Transformation Conference 2023 has been submitted for publication. I'd like to give recognition of input and support from the co-authors and co-production advisory group. My PhD is due to complete in 2024. This work precedes two workstreams: a multi-case study using participatory action research within Suffolk and north east Essex, and a co-produced guidance to support co-production to be embedded within integrated care systems.



Professor Sarah Corrie

University of Suffolk

Sarah Corrie is Professor of Cognitive Behaviour Therapy and Counselling at the University of Suffolk where she is also joint Head of Counselling, Psychology and Social Work. She is a Consultant Clinical Psychologist, Chartered Coaching Psychologist and Founder and Director of Inspiring Transformation Ltd, a company dedicated to creating bespoke services for clients that enable lasting, transformational change. Sarah has extensive experience in coaching, as well as clinical and psychotherapeutic practice in a range of settings and has a national and international profile relating to training and supervision in the fields of applied psychology. In 2016, she was the recipient of the British Psychological Society's Achievement Award for Distinguished Contributions to Coaching Psychology and in 2017 was awarded a Fellowship of the British Association for Behavioural & Cognitive Psychotherapies. Sarah is a former Chair of the British Psychological Society's Division of Coaching Psychology.



Dr Amy Creaser

Bradford Institute for Health Research

Dr Amy Creaser is a Research Fellow at the Bradford Institute for Health Research. She is working within the ActEarly Evaluation Theme as part of its qualitative evaluation. Amy's work involves supporting qualitative evaluations within ActEarly across all the themes and contributing to the meta-evaluation of ActEarly. Amy completed her PhD in partnership with Loughborough University and Born in Bradford, exploring the usability, acceptability and feasibility of using wearable activity trackers to support child health behaviours.



Ioana Crivatu

University of Suffolk

Ioana Crivatu is a PhD candidate at the University of Suffolk, investigating multiple perpetrator rape (i.e., sexual offending involving at least two suspects). Her research focuses on the individuals within the group who do not sexually participate alongside other(s) but are nonetheless present or involved in other capacities. Ioana has a background in psychology, an MSc in Forensic Psychology and an MA in Behavioural Analysis and Criminal Profiling. She has worked on various projects researching suicide, pornography, and sexual violence. She is currently involved with the Institute for Social Justice and Crime working on the Bluestone Soteria programme as a Postgraduate Research Assistant for Bournemouth University and a partner staff for the University of Suffolk. Ioana's primary research interests include violence against women and girls and sexual offending.



Dr Noreen Cushen-Brewster

University of Suffolk

Noreen is an experienced clinician, having specialised in oncology, with a strong scientific and research background. She has worked in several senior nursing roles within health and social care across the UK, Australia and Ireland. She is passionate about putting the patient at the centre of everything she does, whether this is academic study, service development or supervision. Throughout her nursing career, she has worked in close collaboration with other organisations, initiating exchange programmes, providing supervision, running educational programmes, and conducting research.



Professor Sara de Freitas

University of Suffolk

Professor Sara de Freitas is an international author, educator and researcher with a specialism in digital technologies. With a PhD in data science, she has worked across sectors exploring how digitization and the use of digital technologies can transform lives. As a researcher and Director of Research, she has supported the foundation of the London Knowledge Lab (now UCL), established the Serious Games Institute and is currently setting up the Digital Futures Institute to push forward on the frontiers of what we know to support improved natural human computer interfaces and implement positive feedback and reward systems. In support of her theoretical studies, based on systems thinking, her field studies have focused upon quality service provision and growth in regional development. Towards that end, Sara has led academic portfolio areas in four campus-based universities, three colleges, two schools and a network of study centres in the UK, Europe and Australia, including the management and support for tens of thousands of on-campus, online and international students. Her digital strategies and systematic view of education have placed her well to make huge improvements in online and edtech provision across her own and other institutions around the world.



Dr Gavin Devereux

University of Suffolk

Dr Gavin Devereux is an Associate Professor in the School of Health and Sports Sciences at the University of Suffolk. Gavin's research is currently focused on the combined effects of exercise and air pollution on our pulmonary function and health. Gavin teaches across a number of degrees at the University of Suffolk, and has provided consultancy expertise in health, elite sport and fitness technologies.



Dr Mark Edwards

University of Suffolk

I am an Associate Professor of Photography at the University of Suffolk and practicing artist. My work is included in major photographic collections including the V&A Museum, The Government Art Collection, The Hyman Collection of British Photography and Norwich Museum. It has been published and exhibited extensively both nationally and internationally with recent exhibitions including Spotlight, Norwich Castle Museum & Art Gallery, Norwich (2019-20), Into the Woods: Photography & Trees, V&A Museum, London and A Green and Pleasant Land, Towner Gallery, Eastbourne (2017-18). My work is also currently on display at the British Embassy, Berlin, the British High Commission, Islamabad and the Northern Ireland Office, London. Recent publications featuring my work include, Into the Woods: Photography & Trees, (V&A/Thames & Hudson) and Approaching Photography, (Bloomsbury). Recent and forthcoming publications include W.G. Sebalds' Artistic Legacies (peer reviewed chapter, University of Amsterdam, 2022), & Translating John Crome (Full Circle Editions, 2023).



Ufuoma Egbegbedia

University of Suffolk

Ufuoma Egbegbedia is a second year PhD student at the Suffolk Sustainability Institute (SSI) of the University of Suffolk. Ufuoma holds an undergraduate degree in Development Studies from the University of Gambia, The Gambia, and a master's degree in Environmental Management from Coventry University. She has been privileged to provide valued services to corporations on issues of environmental degradation, contamination and sustainability. She has undertaken research to support the understanding of sustainability consciousness in Nigeria, and also worked as a member of a team to promote inclusion, diversity and equality.

Currently, Ufuoma works as a research assistant on the Late Careers Project with the Suffolk Business School, and as a research administrator on the NEE Neighbourhood & LWD Evaluation Project within the Institute of Health and Wellbeing in the University of Suffolk.



Obinna Ejiogu

University of Suffolk

Obinna is a research administrator with the Institute of Health & Wellbeing at the University of Suffolk. Obinna also teaches some modules on Business Management and Leadership at the Suffolk Doctoral College. Obinna has a BSc in Engineering, Master's in Business Administration and an MSc in Finance. Obinna is currently doing a PhD program with Suffolk Doctoral College at the University of Suffolk. Obinna has had over 18 years' of work experience in the banking sector and NHS. Obinna joined the University of Suffolk in October 2022.



Dr Brenna Farrow

University of Northampton

Brenna Farrow is a Senior Lecturer at the University of Northampton (UoN). She teaches across Foundation, BA and MA modules with a particular focus on international perspectives of Special Educational Needs and Inclusion.

Prior to her appointment at UoN, she was a Post Doctorate research Fellow at Palacky University of Olomouc in the Czech Republic where she investigated the attitudes of school principals towards inclusion of students with SEN in regular schools. Her doctoral thesis focused on pedagogy for children with social communication and interaction difficulties attending regular schools in Hong Kong.

Before taking up a career in academia she was a teacher for children with SEN for 18 years, pre-school to post 16, provided professional development for across the full range of educational provision in international schools in Hong Kong and engaged with teacher educators through seminars and workshops in Indonesia and Vietnam.

She is a peer reviewer for several international and Asia Pacific journals, and an international editorial board member of the Asian Journal of Inclusive Education.



Professor Jo Finch

University of Suffolk

Jo is a Professor of Social Work and Post Graduate Research at the University of Suffolk. Jo became interested in the issue of what happens when social work students fail on a placement when she moved from frontline social work practice and began work as a lecturer in social work in 2002. Jo initially explored this in her Professional Doctorate in Social Work and has since published widely on the issue of assessing struggling or failing students on placements. She delivers training with social work practice educators across the country. Jo has also been involved in evaluations of services, for example, suicide prevention and post suicide support services in East Sussex, and the use of the RIX wiki, during lockdown with people with learning disabilities.

She also publishes on the issue of PREVENT and social work and with her cowriter, developed the term “securitised safeguarding”. Jo is the author of “Working with Struggling Students on Placement: A Practical Guide” (2017, Policy Press) and is co-author of “SHARE: A New Model of Social Work” (2018, Kirwan Maclean Associates). Jo is currently writing about racism in social work education, and with Sarah Corrie, fitness to practice processes within universities.



Jan Fish

Lancaster University

Jan is an experienced psychotherapist with a career managing counselling services in the health service, hospice and voluntary settings. Jan is working towards a PhD at Lancaster University focusing on bereavement care and the experience of relatives following a physician assisted death. Jan taught at Birkbeck College as Course Lead and then at the University of Suffolk and now teaches on the MSc CBT & Counselling. She is a qualified clinical supervisor, is an Accredited member of the British Association of Counselling and Psychotherapy (BACP) and is an Accredited trainer with Cruse Bereavement Care.



Dr. Nicola Foster

University of Suffolk

Dr. Nicola Foster is a part-time Associate Professor at the University of Suffolk, currently leading the PhD supervision in Visual Arts. Coming from an academic background in art practice (Goldsmiths College), Continental philosophy and art history (Essex University), Nicola became actively involved in the debate that led to the establishment of 'practice-based' research in the UK. She has published widely in the intersection between philosophy and visual arts with a focus on the construction of value through gender, race, exhibitions, curatorial practices, and art institutions including museums and the art market, and including the history of exhibitions in general.



Ngozi Fulani

University of Suffolk

Ngozi Fulani is a specialist Independent Domestic Abuse Advisor (IDVA), Lead Trainer and Consultant on African and Caribbean heritage women affected by domestic and sexual violence. Ngozi is also the founder of Sistah Space. A former teacher and Master of Ceremonies/Wedding Registrar, Ngozi completed her undergraduate and Master's degree in African Studies, at the School of Oriental and African Studies (SOAS). She qualified as a school teacher at the Central School of Speech and Drama. Ngozi is currently researching issues faced by black victims of domestic abuse, at the University of Suffolk. Ngozi is dedicated to raising awareness about barriers faced by black victims of abuse.



Dr Clare Gartland

University of Suffolk

Dr Clare Gartland has a longstanding interest in social justice and equity in education and has worked extensively in the field of widening access to HE and outreach activity with school and college students. Clare has spent over 18 years researching and evaluating ways to support progression across educational sectors and has led over 15 research and evaluation projects in this field. She has undertaken research projects in the UK and USA specifically focusing on the contribution of student ambassadors to outreach activity with younger students from underrepresented groups, and has published a monograph, three journal articles and three book chapters on this subject. She is currently leading an Erasmus+ HE partnership project focusing on developing training for student ambassadors to support the inclusion of underrepresented groups in HE.



Victoria Green

Marie Collins Foundation (MCF)

Victoria joined the MCF team as a director in 2015 where her portfolio included the development, delivery, and enhancement of Click: Path to Protection, MCF's unique training programme to enable frontline workers to better protect children harmed online. She is a registered social worker with over 30 years' experience working in the field of child protection. She has a wide range of experience at both operational and strategic level and has been a frontline worker, manager, principal social worker and Safeguarding Children Board development and strategic manager. She was appointed CEO in July 2021.

Victoria advocates for children's rights when responding to online child sexual abuse and exploitation. She does this through influencing government policies and strategies to ensure appropriate responses for victims and survivors of sexual abuse and exploitation online and working with survivors promoting their voice to influence change at local, national and international level.



Emma Harvey Lawrence

University of Suffolk

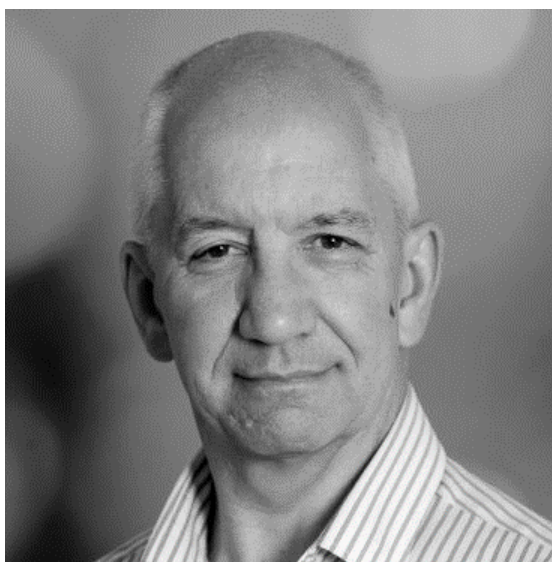
Emma is conducting an interdisciplinary research project to establish a better understanding of sustainable healthy eating practices for everyone (SHEPE). As a post graduate researcher at the University of Suffolk (UoS), she is studying the role of nutrition in health and sustainability. The working title for her PhD is: Does Suffolk know how to eat sustainably? Emma first studied Commercial Music Business at the University of Westminster in 2007 and worked in the live music sector for several years. Returning to Suffolk in 2012, she helped to set up a private health and wellness clinic. With health at the heart of her business, she graduated from the UoS in 2019, with a Bachelor of Science with honours degree in Nutrition and Human Health. Emma is an associate registered nutritionist (ANutr) and works as a lecturer in public health within the School of Health and Sports Sciences, as well as an occasional lecturer within the School of Engineering, Arts, Science and Technology.



Tanya Heasley

Canterbury Christ Church University

A pioneer in anger-informed coaching, Tanya Heasley FRSA founded Ascend Together CIC with a mission to improve the lives of young people affected by anger. Dedicated to the promotion of positive anger in schools, she has changed the way in which teachers respond to aggressive behaviour and disruptive classroom situations. She holds a master's degree in Applied Positive Psychology and Coaching Psychology and is currently researching the psychological perspectives of anger in education as part of her PhD. Tanya manages multiple businesses and has received several awards for her achievements as an entrepreneur, as well as her contributions to social progress and development. Among other contributions, she wrote a chapter in the book *Addressing Multicultural Needs in School Guidance and Counselling*, as well as articles on cultivating mental health for *Brainz Magazine*. Besides being a researcher, writer, and serial entrepreneur, she is a TEDx speaker, painter and a mother of four children. She is also autistic.



Professor David Heatley

University of Suffolk

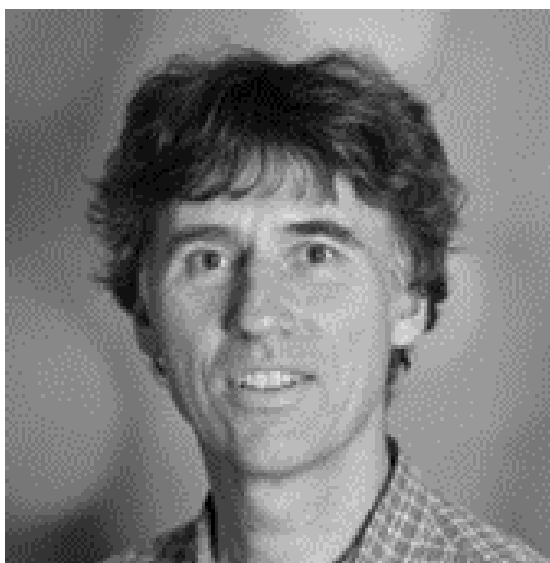
Prof David Heatley is an experienced researcher, having spent the majority of his professional career leading projects across a broad range of technology areas and application sectors. He began his career with BT at their world-renowned research centre at Martlesham, where he was latterly one of the Chief Technologists. His research activities spanned many of the principal telecommunication technologies (optical fibre systems, land and undersea cables, and cellular systems) and how they can be used to deliver innovative new services. After his time at BT he co-founded and led the research activities of MedTech SMEs aimed at bringing together technology and medical practice in novel ways that enhance the degree of care that can be administered. That work led to him being appointed the Visiting Professor of e-Health Innovation at the University of Suffolk. His current research is focused on developing a new type of medical scanner for stroke patients that can be transported to the site of their emergency and used in complete safety without prior planning or precautions. It uses some of the same technology as today's smart phones, and hence is fundamentally safe, readily portable, and potentially low cost.



Dr Pat Hurrell

University of Suffolk

Pat was awarded a first-class BA in Art and Design with Literary Studies at Suffolk College in 1998, completed a one-year MA with distinction in History and Theory of Modern Art at the University of Essex and then began doctoral studies at the same institution. Her PhD, awarded in 2004, brought feminist and psychoanalytical perspectives to historical and contemporary artistic representations of women as 'hysterics'. Post-PhD, she was commissioned to write a monograph on the life and work of local sculptor and teacher Bernard Reynolds, published in 2009 as *The Sculptor Bernard Reynolds*. In 2007, Pat was appointed lecturer in Contextual Studies at Suffolk College (now the University of Suffolk), teaching on Fine Art, Graphic Design and Photography degree courses and establishing a notable three-year contextual studies programme for Photography. Locality, power and gender are key interests articulated in five conference papers and sessions from 2013 to 2020; for example, Pat convened a session entitled 'Envisioning East Anglia' for the 2015 annual conference of the Association for Art History. In 2023, Pat anticipates growing her teaching and research and working with Dr. Nicola Foster as co-supervisor for the first confirmed PhD candidate in Visual Arts within Suffolk Doctoral College.



David James

University of Suffolk

David is an Associate Professor in Sociology and Course Leader for Sociology, Criminology and Politics programmes at the University of Suffolk. David has a long standing interest in effective learning and teaching and a concern with sources of change in educational systems. He is a Senior Fellow of the Higher Education Academy. He has undertaken evaluation work that has examined social policy interventions for young people, city centre policing practice and crime reduction. He has a wide interest in social theory and social change with a recent focus on the study of a well-considered materiality.



Nafiseh Javan

University of Suffolk

Nafiseh Javan is a PhD student. She completed her BSc and MSc in Psychology at the University of Suffolk. She is passionate about behavioural science, so after the crises that occurred during the Covid-19 pandemic, the over-purchasing of necessities and the chaos created by some consumers she made her decision to start her PhD in order to understand the reasoning behind people's behaviour when going about their necessities during this time. She started this multidisciplinary subject of Psychology and Business in 2021 and is now in her third year of the full-time course. Besides her PhD study, she works part-time as a research associate at the Institution of Health and Wellbeing and as a Student Life Mentor to guide and support the new starters at the UoS.



Dearbhla Jordan

Sport Ireland

Dearbhla Jordan - Dearbhla is a Research and Evaluation officer in the Research and Innovation Unit of Sport Ireland. Her work involves leading on, developing and implementing a systematic approach to researching and evaluating a range of sport and physical activity participation initiatives. She has an MSc in Coastal and Marine Environments and specialised her research in climate change adaptation and sustainability policy development and measuring policy impact. In her current role, she has worked on upscaling Sport Irelands Systemic Evaluation system and has led on a number of large-scale project evaluations including: Evaluation of Sport Ireland Active Cities, Evaluation of Sport Irelands Innovation for Sport Inclusion Fund and Evaluation of Sport Irelands Social Inclusion Disability Programme Fund.



Lawrence Jordan

Marie Collins Foundation

Lawrence Jordan is the Director of services at Marie Collins Foundation (MCF). Lawrence manages all aspects of projects undertaken by MCF and manages a number of the MCF staff. Lawrence is a keynote speaker and delivers specific courses on sexual abuse. As part of the MCF ethos in ensuring the victim-survivor voice is at the heart of our work, and to ensure we don't lose sight of this value Lawrence undertakes some direct work with victims-survivors of Technology Assisted Child Sexual Abuse (TACSA).

Lawrence has worked within the Children's Social Care arena since 2003 and is a qualified social worker. He has worked in many different teams including an emergency social work team, a multi-agency safeguarding team and with Child Sexual Exploitation (CSE), overseeing a team of specialist CSE support workers. He has also worked as a social worker in a Multi-Agency Safeguarding Hub (MASH) as well as a case holding social worker with a family support team. He was the local authority Professional Lead for Children Missing, Exploited and Trafficked and created a multi-agency hub to respond to all forms of child exploitation and the child missing service; a team that is still operating today.



Lisa Leggett

University of Suffolk

Lisa is a Research Assistant at University of Suffolk in the Suffolk Sustainability Institute. She is currently undertaking research as part of the Net Zero Innovation Programme Partnership Project between West Suffolk Council and the University of Suffolk. The project aims to produce a guide for local authorities on how to request and use application-linked particulate matter sensor monitoring data and analyse two years of Air Quality sensor data. She is also an Education Consultant, working with schools and multi-academy trusts to improve educational outcomes. Lisa is currently undertaking the MSc Data Science and Artificial Intelligence, gaining skills in designing robust architectures and computational solutions to ethically derive meaningful insights into data. She also holds a BSc in Digital and Technology Solutions (Software Engineering). Until recently, Lisa's career was within the local government sector, having worked with a wide range of council departments, specialising in digital transformation. She is a member of BCS, the Chartered Institute for IT.



Dr Ivana Lessner Listiakova

University of Suffolk

Dr Ivana Lessner Listiakova is an Associate Professor in Childhood and Education at the University of Suffolk. Her expertise and research interests are holistic practice in education, mental health and social care. She has been involved in research projects focused on improving initial university training and continuous development of professionals working with children and families in early childhood intervention, specifically focusing on neurodiverse families, sensory strategies and creative methods.



Vicky Lucas

University of Suffolk

Victoria Lucas has been employed as a Mental Health Nurse & Psychotherapist for 19 years working in a range of settings: forensic, substance misuse, adult mental health and children and adolescents, and veterans, and is a University Lecturer. Victoria is an accredited therapist and supervisor with the BABCP, currently working in hands, PTSD with Veterans and is a Lecturer at the University of Suffolk. Victoria is passionate about driving forward quality services and has a proven track record having been part of the initial children's IAPT services and the development/implementation of user participation. She has advanced and innovated the quality of care provided in times of austerity through effective supervision, training, and the design of evidence-based group work. Her appointment into hands (Pulvertaft Unit) has seen a CBT pathway developed which has been pioneering within a physical care setting. She won the inclusion award at the Royal Derby Hospital.



Dr Linda Maguire

The Open University

Dr Linda Maguire is a Research Fellow in the Centre for Policing Research and Learning at the Open University, UK. Linda is working currently on a Home Office funded research, Operation Soteria Bluestone. The team at the OU are focusing on Pillar 4 of the project, the learning, development and wellbeing of officers investigating rape and serious sexual offences (RASSO). She is responsible for the preparation for change in respect of the forthcoming National Operating Model, for police officers in England and Wales. Linda's interest in supporting the wellbeing of uniformed organisations has included the UK military and veteran networks, focusing on veterans in the criminal justice system (CJS). Specialising in qualitative research methods, she has a solid track record of research projects to further understand the needs of police officers, military-to-civilian transition, veteran offenders and their families. Linda has been on the panel of several veteran expert steering groups and her portfolio of publications includes peer reviewed journal articles, book chapters and House of Commons Select Defence Committee submissions.



Dr Mark Manning

University of Suffolk

I am a Senior Research Fellow within the Institute of Social Justice and Crime at the University of Suffolk where I jointly lead a research theme titled 'People, Justice and Security'. After a career in policing, I gained employment as a lecturer in criminology in 2014. Criminology and more broadly social sciences is a cognate area which presents numerous opportunities to relate theory to policy and practice and I have been fortunate to work with many colleagues with previous experience as social workers, probation officers, solicitors, prison officers and researchers - all of whom sharing valuable insights gained from practice. However, as we know, these practices also come under public scrutiny from time to time and usually through allegations of malpractice or criminal conduct. In such cases, the response by policy makers is usually to create more rules and guidelines used as a 'stick' against practitioners. My interest in virtue ethics offers a 'carrot' to practitioners by reflecting more deeply about the character of the individuals who choose to join these professions and to understand the ethos which inspires them to do good in the communities they serve. Virtues ethics provides a useful lens to achieve this.



Dr Liina Mansukoski

University of York

Dr Liina Mansukoski is a Research Fellow at the University of York, based at the Bradford Institute for Health Research. She is working within the ActEarly Evaluation theme. Her work focuses on developing core outcomes sets for ActEarly, supporting the meta-evaluation of the program and using quantitative methods to understand overall system change as a result of the ActEarly interventions. Liina completed her PhD at Loughborough University in 2019 and has a background in Human Biology and Anthropology. Her wider research interests include socioeconomic inequalities in child and adolescent health and growth globally.



Professor Colin R. Martin

University of Suffolk

Colin R Martin is the Clinical Director of the Institute of Health and Wellbeing at the University of Suffolk, UK and Professor of Clinical Psychobiology and Applied Psychoneuroimmunology. He is a Chartered Health Psychologist and a Chartered Scientist. He also trained in analytical biochemistry, this aspect reflecting the psychobiological focus of much of his research within mental health. He is also a clinician who specialised for many years in alcohol and drug abuse, indeed one of his first books was Identification and Treatment of Alcohol Dependency published in 2008. He has published or has in press well over 300 research papers and book chapters. He is a keen book author and editor having written and/or edited more than 30 books. Professor Martin is particularly interested in the psychobiological interface between physical illness and its impact of mental health and how this relationship impacts on the course of disease outcome.



Professor Brian McCook

University of Suffolk

As Dean of Social Sciences and Humanities, I lead an innovative School of research-active scholars dedicated to serving the needs of a diverse, creative, and vibrant student body. We pride ourselves on co-creation, working with our students and external partners to build a shared vision and passion around community engagement, promoting social justice, and working to change lives for the better. By academic background, I am a comparative social and cultural historian of the 19th and 20th centuries. My research interests are wide ranging and include the study of ethnicity and nationalism, citizenship, diaspora, and transnational migration. I teach and supervise on areas relating to these thematic areas, with specialist geographic focus on Central and Eastern Europe, the UK, and the United States. I am currently working on a monograph project related to the migration and settlement of East European refugees in the UK during and after World War II.



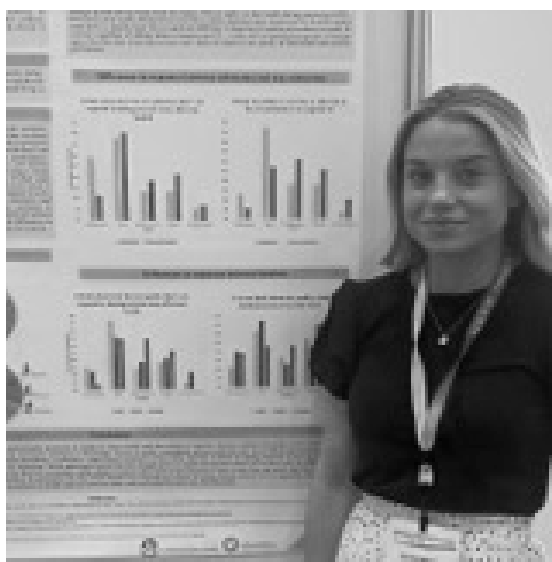
Katrina Messiha

VU University Medical Center Amsterdam

Katrina Messiha is a Marie Skłodowska–Curie PhD fellow at the VU University Medical Center in Amsterdam, working as part of the Health CASCADE project funded by the European Union's Horizon 2020. Prior, Katrina earned a First-Class Honours degree in Population and Geography from the University of Southampton in 2018, followed by a Distinction in her Master of Science degree in Social Policy and Social Research from University College London (UCL) in 2020.

Katrina's PhD work is on Theory-based Principles for Co-creation in Public Health. Through collaborations with her project team and other partners, she is exploring both the complexities of public health and the promise of co-creation approaches with diverse stakeholders. Her work on the project includes developing innovative co-creation methodologies, building the theoretical foundation and evidence base of co-creation approaches and generating core theory-based principles capable of eliciting co-creation as a concept and methodology.

Katrina's commitment to her research is demonstrated through her lecturing, scientific articles and conference presentations. She collaborates with researchers and practitioners from diverse backgrounds and engages in interdisciplinary work. Her academic and research contributions reflect her passion for addressing public health challenges through co-creation.



Scarlett Moloney

University of Suffolk

Scarlett is a Research Associate within the School of Health and Sport Sciences and has supported a range of diverse projects across the University's Research institutes relating to long-covid, health behaviour mapping and air quality in Suffolk.

Scarlett was a co-applicant on successful UKRI Policy Support Fund application for a project investigating the relationship between traffic related air pollution and airway inflammation in primary school children at school pick-up time. This project received interest and support from the support from regional and national organisations including Suffolk County Council, Ipswich Borough Council and Asthma and Lung UK.

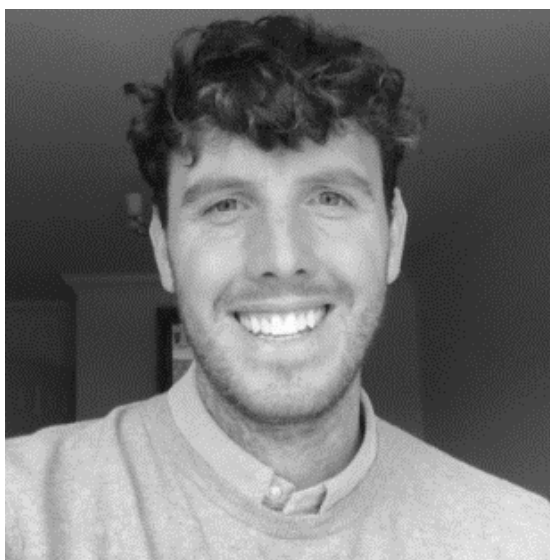
Scarlett is also studying a PhD that investigated the combined impact of ambient air pollution and outdoor exercise on lung function in asthmatic and non-asthmatic habitual exercisers. Scarlett has recently presented her PhD research at the EuroPhysiology conference in Copenhagen.



Dr Violeta Negrea

University of Suffolk

Dr Violeta Negrea obtained her PhD in Research related to Education at the University of Suffolk in 2021. The focus of her research was on the pedagogy of learning to teach science in initial teacher education programmes. Other research interests covers inclusive pedagogy for teaching and learning, STEM education, teacher education, systematic review methodology, qualitative research and cognitive psychology. Her teaching experience in higher education covers STEM education and understanding the world at undergraduate level and theory in research at postgraduate level. After her PhD, she has been engaged in a few research projects in the School of Social Sciences and Humanities. Within the international Erasmus + Diploma project she undertook the lead of two systematic reviews on widening participation in higher education for underrepresented students. Currently, she is engaged as one of the principal investigators in an outreach STEM activity with a local school. As an early career researcher, she has in revision five articles for publication.



Dr Phil Nicholson

University of Suffolk

Phil is a Lecturer in Education at the University of Suffolk. His research interests include the impact of socio-cultural-political factors on educational practices, how pedagogies differ in different types of school and critical and democratic pedagogy. Phil is a Fellow of the Higher Education Academy and leads the University of Suffolk Learning and Teaching Webinar series



Dr James Nobles

Leeds Beckett University

James is a pragmatic, mixed methods researcher with specialist expertise in the prevention and treatment of obesity. His core interests lie within the design, implementation and evaluation of systems approaches to help address non-communicable diseases. Throughout the last 10 years, James has developed an extensive research portfolio within the fields of non-communicable disease prevention and treatment. He works closely with local and national policy makers to ensure that research being undertaken, and the associated findings, are able to translate meaningfully back into the decision-making processes.



Corretter Ongus

University of Suffolk

Corretter Ongus (CBM, DPSM, IBM & MBA) comes from a Luo Community in Kenya. She attended her primary and secondary education in the county of Kisumu, before relocating to Kenya's capital city Nairobi to start her higher education where she obtained a certificate in Business Management (CBM) and a higher diploma in Purchasing and Supplies Management (DPSM) from Kenya Institute of Management.

In 2011 Corretter moved to England to continue with her studies in the field of business where she graduated with a bachelor's degree in International Business Management (IBM) and later a master's degree in Business Administration (MBA) from York St John's University in York, United Kingdom.

Coming from a diverse nation, Corretter has always been keen in understanding the people's and organizational culture, people's beliefs, and language, and more recently how all these translate to the growth of the country's economy. Corretter is undertaking her PhD in the field of financial investment, with the aim of understanding the degree to which culture, language, and belief shapes investment decision in Kenya at the University of Suffolk, Suffolk Business School, under the direct supervision of Dr Tom Vine and Dr Kay Maddox-Daines.



Dr Christopher Owens

University of Suffolk

Dr Christopher Owens is a Senior Lecturer in Public Health in the School of Health and Sports Sciences at the University of Suffolk. Christopher is also currently involved in two evaluation projects as a member of the Institute of Health and Wellbeing at the University of Suffolk. Christopher has experience of undertaking quantitative research and qualitative research and has research interests in a broad range of Public Health areas. Christopher has a wealth of experience in teaching Public Health and before joining the University of Suffolk held previous permanent academic positions in public health at Coventry University and the University of Nottingham. Christopher's PhD was in the area of physical activity and sedentary behaviour among adolescents which he undertook at the University of Gloucestershire and his MSc by Research was in the area of mental health and wellbeing which he also undertook at the University of Gloucestershire.



Laura Polley

University of Suffolk

Laura is a Lecturer in Criminology within the School of Social Sciences and Humanities at the University of Suffolk. Her research focuses on lived experiences of sex work and pornography through a feminist lens. Laura is interested in how research is done with women who have lived experience of sexual labour, and the potential this has to advance academic discourse concerning hidden identities. Laura is currently undertaking a PhD exploring the perceptions and experiences of women in regards to the OnlyFans platform, a website which offers tacit permission for the exchange of sexually explicit video and photographic content. Laura also lectures on the Undergraduate Criminology programmes at UoS, teaching a range of modules concerning criminological theory, feminist criminology, contemporary issues in criminology and the rehabilitation of those with convictions.



Dr Alison Pooley

University of Suffolk

Alison leads the Sustainable Healthy Communities theme within the Suffolk Sustainability Institute. Alison has extensive experience within higher education, particularly within architecture and the built environment, where she has led and developed undergraduate and postgraduate courses. Prior to her academic career, Alison worked as a housing officer in East London, which led her to retrain in architecture, where she practiced for several years. Alison completed her PhD at the Welsh School of Architecture, exploring transformational learning with the UK construction industry. Her research preoccupations remain focused on healthy, resilient communities, and responding to the environmental imperative through transforming practice. Alison retains her links with the Centre for Alternative Technology, where she taught for over 10 years and supervises PhD students across a range of built environment themes. As well as having an active research and teaching profile, Alison is a trustee of two local housing charities. Her current research is focused on housing, resilience, and equity; bringing her professional practice full circle to address issues of housing provision and performance.



Dr Laura J Reeves

University of Suffolk

Dr Laura J Reeves is an early career researcher in the Academy of Leadership and Management at the University of Suffolk. She completed her PhD in December 2021, which explored nomadic perspectives of migrant workers sense of belonging in the UK restaurant sector in light of Brexit. Since joining the University of Suffolk in 2022 Laura has been involved in an evaluation project, a number of applications for funding surrounding agile working and mental wellbeing at work. In her first year at Suffolk Laura has worked on three papers, two of which are currently under review with Human Relations and Journal of Business Management. Her third paper will be submitted to Work, Employment and Society in the coming months. She is currently working on an internally funded project which considers the experiences of late-career people in the workplace after the menopause. Her research interests include women at work, leadership and management in organisations, relationality at work and alternative ways we can do organisational research.



Dr. Adeela Rehman

Fatima Jinnah Women University, Rawalpindi-Pakistan

Dr. Adeela Rehman completed her Ph.D. in Sociology & Anthropology from the International Islamic University, Malaysia and did her Masters in Gender Studies from Fatima Jinnah Women University, Rawalpindi. She is currently serving as an Assistant Professor at the Department of Sociology, Fatima Jinnah Women University, Pakistan. Her areas of expertise are; medical/health sociology, public health, social entrepreneurship, culture, and gender issues on which she has presented at a number of national and international conferences and seminars as a presenter and a guest speaker in the USA, Malaysia, China, Singapore, Thailand, Indonesia, and Turkey. In recognition of her teaching excellence in research in the field of gender, health, social innovation, and sociology, she has been awarded numerous national and international awards including: "Rosina C. Chia Teaching of Excellence Award 2015" presented by Global Partners in Education USA on the 12th Day of May 2015. She worked at The University of Texas, Austin USA as visiting faculty in 2013 for one semester. Being a Gender Expert and a Medical Sociologist, she is interested in studying women's health issues and problems with reference to the healthcare system of Pakistan.



Dr Jessica Renzella

University of Oxford

Jess is a Lecturer in Population Health and researcher at the Nuffield Department of Primary Care Health Sciences, University of Oxford. Jess's research interests include population approaches for noncommunicable disease (NCD) prevention, healthy and sustainable diet promotion, and the co-production of interventions. Jess is currently working on an MRC funded project to co-produce an action plan for the reduction of unhealthy food consumption in the London Borough of Newham using systems mapping approaches. She is also working on an ESRC funded project to co-develop food system trials for impact on environment, nutrition, and health.



Omoboroji Rich

University of Suffolk

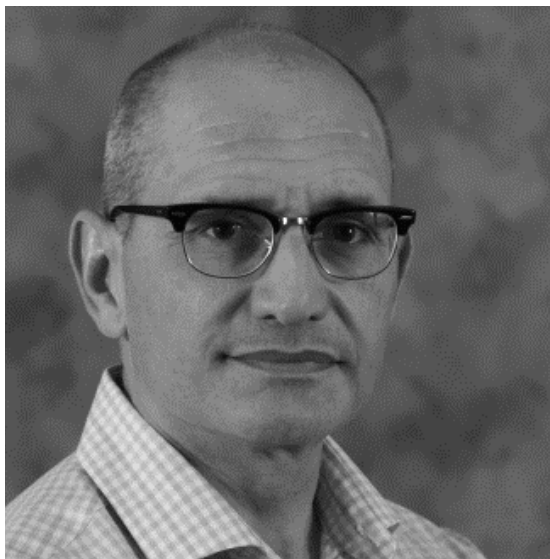
Omoboroji Rich is a current international postgraduate student in the MA Childhood Studies Course at the University of Suffolk. She holds a BSc in Sociology and a diploma in Montessori Early Years (MACTE) 2½ to 6 years. She has 13 years' experience working with children in early years, seven of which were at the Supervisory level. Omoboroji is passionate about directly or indirectly equipping people whether child or adult with appropriate information and right tools with the required guidance, they need in developing skills needed to thrive in life. She is an aspiring researcher with interests in holistic approach to well-being, content creation, and public relations and communications. Omoboroji is a student researcher in Co-Creating Learning Hubs.



Dr Keith Ruiter

University of Suffolk

Dr Keith Ruiter is an interdisciplinary medievalist working at the intersection of history, law, archaeology, and literature, especially on topics like legalism, normativity, punishment, and personhood in Viking-Age Scandinavia and its diaspora. He has a passion for using innovative and culturally comparative methodologies for researching and teaching the medieval world – including Indigenous Studies, Posthumanist, and Game Studies approaches – with an eye towards fostering richer and more inclusive dialogue about this period and its many connections. Before coming to Suffolk, he held a Social Sciences and Humanities Research Council of Canada Postdoctoral Fellowship at the Université de Montréal working in the Laboratory for Public Archaeology on his ongoing monograph project which brings Indigenous legal knowledge to the study of early Scandinavian law. This project has also been supported by a Wallace Johnson Fellowship for First Book Authors from the Medieval Institute at Western Michigan University.



Dr Michael Sauter

University of Suffolk

Dr. Michael Sauter is Associate Professor of History at the University of Suffolk. He is an historian of early modern Europe, with specializations in intellectual history and the history of science. He completed his BA at Drew University (magna cum laude, Phi Beta Kappa), his MA at the University of North Carolina at Chapel Hill, and his PhD at the University of California, Los Angeles.



Warren Scott

University of Suffolk

With over 30 years as a leader in Organisation Development, Warren's experience ranges across a number of business sectors, latterly that of Health and Care. He utilises approaches and insights from Gestalt Psychology in an organisational setting to work with individuals, teams and whole organisations, with a focus incorporating the people and relational processes of work.

For the past three years, whilst carrying out research projects and teaching in the university, for his PhD subject Warren has been researching the leadership of problems which are insurmountable and ever changing, known as 'Wicked problems'. He is utilising Kurt Lewin's Field theory as a lens to understand this phenomenon, especially how 'Wicked problems' can be engaged successfully by leaders. The eventual aim of his research is to inform how organisations can develop, train and encourage leaders with the abilities and mindset to firstly understand the nature of Wicked problems and secondly to engage them effectively.



Dr Emily Setty

University of Surrey

Dr Emily Setty is a Senior Lecturer in Criminology at the University of Surrey. Her academic research focuses on young people's experiences of sex and relationships, both online and offline, and how the 'online world' is affecting their socio-sexual development, learning, and behaviour. She primarily conducts qualitative research whereby she speaks directly with young people about their perspectives and experiences and critically interprets the accounts they produce about how they are being affected and influenced by their experiences in their relationships and peer cultures. Dr Setty has recently conducted research on how lockdown affected sex and relationships for young people; risk and transgression online for youth; educating teenage boys about consent; harmful sexual behaviours and peer-on-peer abuse in schools; and 'influencer culture' for girls and young women. She works closely with a range of frontline professionals and organisations working with young people and national and local government to translate research findings into effective policy and practice designed to address the issues and challenges that young people face regarding sex and relationships in their contemporary digital cultures.



Naomi Simons

Suffolk Mind

Naomi Simons has been Research & Evaluation Manager at Suffolk Mind since 2016. As part of this role, she runs a commercial research service, collecting data from organisations on staff mental wellbeing, evaluates the impact of Suffolk Mind's services and measures the mental health of Suffolk's general and clinical population. Prior to this, she was a Research Assistant at the Institute to Cognitive & Evolutionary Anthropology at the University of Oxford. She is also currently a PhD Student with the University of East Anglia and the University of Suffolk, researching the culture around mental health in organisations. The modified Emotional Needs Audit (ENA) has featured significantly in her work at Suffolk Mind. She's pleased to have played a supporting role in the validation of the measure by the University of Suffolk team, which was led by Colin Martin.



Dr Andrea Smith

University of Suffolk

After nearly thirty years in journalism, a long-held love of literature and a desire to help young people develop their talents and skills led Dr Smith to change career and move into teaching. Her research focuses on radio drama, specifically Shakespeare, and examines the ways these productions use voice, music, sound effects and other non-verbal noises to transmedialize a text intended for the stage into a play that works in audio form. In addition, it situates these productions in their historical context, in terms of both literary criticism and other types of performance. Her career prior to joining the University included working for two Suffolk newspapers and the BBC, as well as setting exams for the National Council for the Training of Journalists. She is an occasional contributor to programmes on BBC Radio 3 and has written for academic and non-academic publications, as well as presenting at several conferences. She is also a passionate advocate for access to Higher Education, having started her academic career as a mature student and seen the difficulties many young people in Suffolk continue to have in getting the opportunity to pursue studies at university.



Philip Solomon-Turay

University of Suffolk

I am a 4th year PhD student at the University of Suffolk studying sport and exercise psychology. I have a keen interest in the psychological variables which impact athletes within a variety of sporting situations. From this interest I have been able to gain experiences in the applied, teaching and research side of sport psychology. I have been fortunate to travel to multiple countries for conferences and educational purposes and this has greatly shaped my understanding of sport psychology. I aim to continue on this career pathway of sport psychology, complete my PhD and work as a lecturer and as an applied practitioner.



Dr Hannah Steventon

University of Suffolk

Dr Hannah Steventon, Research Fellow in the Suffolk Sustainability Institute, leads our green infrastructure theme. Her research interests include sensor-technology and data analysis to understand the built and natural environment, applying innovation to resource management and sustainability. The collaborative DfT-funded Smarter Suffolk project created a county-wide Live Lab of thousands of IoT sensors measuring environmental and traffic conditions, showcasing innovative technologies to inform Local Authority transport, planning and environment services. Initially a hydrogeologist, Hannah led land regeneration projects. Professional experience includes analysis and modelling of environmental data, site project management, and laboratory chemical analysis. Her doctoral research showed how natural organic matter affects the movement of contaminants through the ground, and she taught Hydrogeology and Pollution at Birkbeck University of London. Hannah holds a MA in Natural Sciences from the University of Cambridge, and an MSc and PhD in Hydrogeology from University College London. She is a Chartered Geologist and Fellow of the Geological Society.



Dr Ruth Strudwick

University of Suffolk

Ruth is Head of Allied Health Professions and Associate Professor in Diagnostic Radiography in the School of Health and Sports Sciences at the University of Suffolk.

Ruth is a Diagnostic Radiographer by background. She has been a Lecturer since 2003, and before that worked as Clinical Lecturer at The Ipswich Hospital NHS Trust and as a Diagnostic Radiographer at The Ipswich Hospital NHS Trust.

Ruth completed her professional doctorate in 2011 entitled 'An ethnographic study of the culture in a Diagnostic Imaging Department'. She continues to be research active and her funded research focuses on radiography professional practice and education, and on service evaluation.



Hannah Taylor

Essex County Council

Hannah is a Senior Researcher at Essex County Council leading the insight and evaluation work for the Active Essex Local Delivery Pilot. This involves leading a small team of researchers and an analyst to understand both what might work and what has worked to reduce levels of physical inactivity in areas of deprivation. Prior to this, Hannah worked within the field of substance misuse, starting as a practitioner before moving into a data analysis role. Hannah's academic achievements include a BSc in Psychology (Brunel University) and a Masters in Public Health (University of Essex).



Dr Will Thomas

University of Suffolk

Dr Will Thomas is an Associate Professor within the School of Engineering, Arts, Science and Technology at the University of Suffolk. He works on a number of interrelated topics although his main focus, for the last five years, has been on health and social care management, particularly focusing on responses to the 'wicked' problems caused by economic, demographic and social pressures. Most recently, his attention has been on the application of the ethics of care to leadership and management challenges largely through work that focuses on the relational elements of leadership and through work on inclusive leadership.



Dr Jo Trowsdale

University of Suffolk

Dr Jo Trowsdale's lifelong interest is the education and the development of young people. Her research interests span a breadth of educational theory, practice and sociology of education. She has taught in schools and Higher Education, developed teacher education courses at primary and secondary level, led arts education programmes for a major arts centre and, at policy level, a regional arm of a national creative learning programme.

Jo is concerned with innovative education practices grounded in the relationships between humans: their practices, contexts and their ways of developing understandings. Her current research in STEAM education argues for a review of 'art making' as a site for learning, and an educative practice. Drawing upon the concept of communities of practice, she argues for learning designs connected to and characterised by the culture, spaces and practices of art-makers, which stimulate the affective, enactive as well as cognitive dimensions of learners.



Dr. Nick Tucker

University of Suffolk

Dr. Nick Tucker is the course leader for Biomedical Sciences. He is a molecular microbiologist interested in the biology of *Pseudomonas* bacteria. This genus contains pathogens such as *Pseudomonas aeruginosa* as well as the important biotechnology chassis organism *Pseudomonas putida*.

Nick grew up in Suffolk and studied biochemistry at Heriot-Watt University in Edinburgh followed by human molecular genetics at Imperial College London where he gained an interest in gene regulation. In 2002 he moved to the University of East Anglia to study transcriptional regulation of the *Escherichia coli* nitrosative stress response and completed this work at the BBSRC John Innes Centre in 2005. He remained at the John Innes Centre as a post-doctoral research fellow until establishing his own research group at the University of Strathclyde in 2009. During 13 years at Strathclyde Nick's work has been funded by various sources including BBSRC, MRC and the Industrial Biotechnology Innovation Centre, where he served a term as a member of the IBioIC Scientific Advisory Board. Nick maintains an honorary research role at Strathclyde and is an active member of the Microbiology Society as an elected member of the Prokaryotic Division and an editor of *Microbiology*.



Lotte Tyndale-Hardy

Suffolk Mind

Lotte Tyndale-Hardy is a member of the Research and Evaluation department at Suffolk Mind. She initially started there as a Research Assistant in 2021 after graduating from the University of Edinburgh in 2020 with a first in Mathematics and now enjoys bringing a statistical, analytical approach to the team.

The practical implementation of the research undertaken at Suffolk Mind is of particular interest to Lotte. This involves supporting organisations to help their staff better meet their Emotional Needs and improve their mental health and wellbeing at work. This idea has been put into practice on a much wider scale with the Public Mental Health Emotional Needs Audit project with Suffolk County Council, which she has been project managing since the end of 2022.



Amber van den Akker

University of Bath

Amber van den Akker is a PhD candidate at the University of Bath. Her research focuses on multi-stakeholder governance and commercial determinants of health. Her interests are in multi-stakeholder governance, policymaking, commercial determinants of health, and systems approaches.



Dr Peter Van der Graaf

Northumbria University

Peter is an Associate Professor in Public Health at Northumbria University, where he manages the AskFuse service. AskFuse is the rapid response and evaluation service of Fuse, the Centre for Translational Research in Public Health, which supports collaborative projects between academics and policy and practice partners in the North East of England and beyond.

He is Deputy-Lead for the Knowledge Mobilisation and Implementation Science theme within the NIHR Applied Research Collaboration (ARC) for the North East and North Cumbria (NENC), and a member of the NIHR Public Health Intervention Response Studies Team (PHIRST Fusion), which supports local authorities across the UK with evaluating their interventions. For example, he is leading an evaluation of the Whole Systems Approach to Child Healthy Weight in Dundee applying a peer research approach.



Paulo Vieira Braga

University of Suffolk

Paulo is a Research Fellow in the Centre for Excellence in Learning and Teaching at the University of Suffolk. His experience at universities has involved institutional research, analysing and evidencing progress of regulatory agendas, such as TEF and APP, as well as developing advanced analytical tools to support learning and teaching. With interests in data science and education, he aims to discover data-driven solutions that enhance the student experience.



Dr Tom Vine

University of Suffolk

Tom was recruited by Suffolk Business School in January 2012. In addition to his lecturing, supervision and research responsibilities, Tom currently leads the Suffolk Business School Doctoral Programme. Following his first two degrees at the University of Warwick (BSc Management Sciences; MA Organization Studies), Tom moved to London in 2001 to pursue a career in consultancy. With a keen interest in politics and psephology, he was fortunate enough to find work at the Electoral Reform Services. He worked full time for the company for six years, during which time he gained a range of managerial, supply chain and strategic competences. He was promoted in 2003 to manage a team of project managers and was by this stage responsible for the delivery of several multimillion pound projects in both private and public sectors. He continues to work for the company in a consultancy capacity. In 2007, Tom began his PhD at the University of Essex under the supervision of Professors Chris Land and Harro Höpfl. His doctoral research used the immersive methods of organizational anthropology to study unconventional work practices at a large intentional community (commune) in Scotland.



Dr Jane Watt

University of Suffolk

Jane Watt has developed modes of critical engagement in site-specific installation and engaged practice for over 25 years. Her practice and field research includes interdisciplinary projects at Central Saint Martins, University of Suffolk, and with researchers in Biomaterials & Allied Subjects at UCL.

www.janewattprojects.com

insta: @janewattprojects



Dr Duncan Weaver

University of Suffolk

Before joining Suffolk, I served as Senior Instructor in Police Education (Anglia Ruskin University), Lecturer in Crime, Terrorism and Global Security (City College Norwich), and Graduate Teaching Assistant in International Relations (Keele University). I have studied inter/national security since 2007, holding a BA and PhD (Keele), MScEcon (Aberystwyth) and teacher training qualification (Suffolk New College). My field experience includes employment in West Midlands Police and an academic attachment to the United Nations' Geneva station.



Dr Abigail Webb

University of Suffolk

Abigail is a Clinical Research Fellow at the Institute of Health and Wellbeing at the University of Suffolk. Abigail completed her PhD at the University of Essex, where her research explored human facial emotion perception using psychophysical and behavioural approaches and was recipient of the Economic and Social Research Council's Postdoctoral Research Fellowship, at the University of Essex (2019-2021). During this time, Abigail's research focused on two specific areas: (1) visual processing biases for facial displays of emotion, and (2) exploring the efficacy of virtual reality as a platform for existing and potential audiences of theatre. As part of her role at the Institute of Health and Wellbeing, Abigail is exploring facial emotion processing in clinical populations and is continuing to research virtual reality and applied theatre. Her research in this area examines themes of technology acceptance, the digital divide, factors that influence social and community belonging, and accessible digitisation.



Dr Rachel Williams RNutr

Bradford Institute for Health Research

Over the last 13 years, I have developed, implemented, managed and evaluated health improvement interventions to support people with behaviour change. As a Registered Public Health Nutritionist, I am passionate about the role of food in improving health and wellbeing. My PhD explored the need to move away from one-size-fits-all in weight management services and how more inclusive approaches can be developed to address health inequalities.

I moved to Bradford Institute for Health Research as a Senior Research Fellow in 2020. As an embedded researcher in City of Bradford Metropolitan District Council, I lead on the research and evaluation of a whole systems approach to obesity, health, and wellbeing.



Dr Emma Williams

The Open University

Dr Emma Williams is the Director of Police Research and Strategic Partnerships at The Open University. Emma joined the Metropolitan Police Service as a researcher in 2001. She undertook evaluative research particularly for the rape improvement programme, Project Sapphire. She moved over to the central strategy department in 2004 as a principal researcher, managing a small team of qualitative researchers. In 2010 Emma was offered a secondment to the Ministry of Justice where she worked on the criminal justice reform agenda. In 2012 she joined Canterbury Christ Church University as a senior lecturer where she managed the MSc in service police programmes. She was seconded to the College of Policing in 2018 to help on the PEQF work programme. Prior to joining the OU Emma was the Director of the Canterbury Centre for Policing Research. Emma sits on the executive board for the Society of Evidence-Based Policing and the College of Policing's professional board. Her research interests are police professionalism, rape investigation, social justice and policing and public health.



Dr Reilly Willis

University of Suffolk

Reilly Anne Dempsey Willis is a Senior Lecturer in Law and holds Senior Fellowship with AdvanceHE. She was awarded her PhD from the University of East Anglia in 2020 in Law and International Relations. Dr Willis's work cuts across international human rights law, international relations, and women's rights, with a focus on the role of social media in legal change and justice-seeking. Dr Willis is widely published in this area and regularly shares her expertise on BBC radio regionally and nationally. Dr Willis brings her expertise in data analysis and mixed methods research to the Centre for Excellence in Learning and Teaching at the University of Suffolk, exploring issues relating to social justice and empowerment through access and participation work. She is particularly interested in theory and evidence-based innovations in learning and teaching which increase access, social mobility, and graduate outcomes. Reilly also holds a Juris Doctor from New York University School of Law where she was an International Law and Human Rights Fellow at the Center for Human Rights and Global Justice, and a Masters in Public Health from Columbia University.

